

ZERO U VERTICAL - METERED BY OUTLET WITH SWITCHING RACK POWER DISTRIBUTION UNITS

Metered by Outlet with Switching Rack Power Distribution Units (PDUs) enable advanced, user-customizable power control and individual outlet power metering. Remote outlet level controls allow power on/off functionality for power recycling to reboot locked-up equipment and to avoid unauthorized use of individual outlets. Power sequencing delays allow users to define the order in which to power up or down attached equipment. Avoid circuit overload during power recovery and extend uptime of critical equipment by prioritizing the load shedding. Current metering provides real-time remote monitoring of connected loads. Switched Rack PDUs include real power monitoring, a temperature/humidity sensor port, and locking IEC receptacles. User-defined alarms warn of potential circuit overloads before critical IT failures occur. Users can access, configure, and control Switched rack PDUs through secure Web, SNMP, or Telnet Interfaces.



Part Number / Description	Receptacles Type / QTY		Breaker Amperage / QTY	Power Cord Type / Length	Monitoring (local & remote)	Dimensions H x W x D ("")
PDU-AP8641 1 Phase Amps: 30A Output Volts: 200V, 208V kW: 4.9 Input Volts: 200-240VAC			30 Amp / 2 2-pole hydraulic-magnetic	L6-30P Twist Lock 9.84' Cord 	<ul style="list-style-type: none"> Alarm Thresholds Local Current Monitoring Display Load indicator LED Network Management Capabilities via Web, SNMP, and Telnet Power Delays Metering-by-Outlet capability Remote Individual Outlet Control 	0U 72.00" Vertical 72.00 x 2.20 x 2.00
			On-Off Switch			Toolless Mounting
			No			Yes

Two toolless mounting pegs included. | Detailed monitoring specs available.

ZERO U VERTICAL - SWITCHED RACK POWER DISTRIBUTION UNITS

Switched Rack Power Distribution Units (PDUs) enable advanced, user-customizable power control and active monitoring. Remote outlet level controls allow power on/off functionality for power cycling to remotely reboot equipment and restrict unauthorized use of individual outlets. Power sequencing time delays allow users to define the order in which to power up or down attached equipment to avoid circuit overload. Current metering provides real-time remote monitoring of connected loads with user-defined alarms to warn of potential circuit overloads. Users can access, configure, and control Switched Rack PDUs through secure Web, SNMP, Command Line Interface, or Telnet Interfaces.



Part Number / Description	Receptacles Type / QTY		Breaker Amperage / QTY	Power Cord Type / Length	Monitoring (local & remote)	Dimensions H x W x D ("")
PDU-AP8941 1 Phase Amps: 30A Output Volts: 200V, 208V kW: 4.9 Input Volts: 200V, 208V, 230V			30 Amp / 2 2-pole hydraulic-magnetic	L6-30P Twist Lock 10' Cord 	<ul style="list-style-type: none"> Alarm Thresholds Local Current Monitoring Display Load indicator LED Network Management Capabilities via Web, SNMP, and Telnet Power Delays Metering-by-Outlet capability Remote Individual Outlet Control 	0U 72.00" Vertical 72.00 x 2.20 x 1.80
			On-Off Switch			Toolless Mounting
			No			Yes

Two toolless mounting pegs included. | Detailed monitoring specs available.

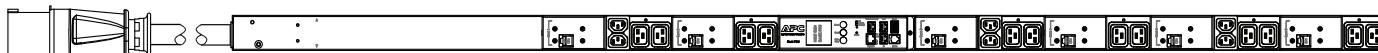


Part Number / Description	Receptacles Type / QTY		Breaker Amperage / QTY	Power Cord Type / Length	Monitoring (local & remote)	Dimensions H x W x D ("")
PDU-AP8965 3 Phase Amps: 30A Output Volts: 208V kW: 8.6 Input Volts: 208V 3PH			30 Amp / 2 3-pole hydraulic-magnetic	L21-30P Twist Lock 6' Cord 	<ul style="list-style-type: none"> Alarm Thresholds Local Current Monitoring Display Load indicator LED Network Management Capabilities via Web, SNMP, and Telnet Power Delays Metering-by-Outlet capability Remote Individual Outlet Control 	0U 72.00" Vertical 72.00 x 2.20 x 2.00
			On-Off Switch			Toolless Mounting
			No			Yes

Two toolless mounting pegs included. | Detailed monitoring specs available.

ZERO U VERTICAL - METERED RACK POWER DISTRIBUTION UNITS

Metered Rack Power Distribution Units (PDUs) provide active metering to enable energy optimization and circuit protection. User-defined alarm thresholds mitigate risk with real-time local and remote alerts to warn of potential circuit overloads. Metered Rack PDUs provide power utilization data to allow Data Center Managers to make informed decisions on load balancing and right sizing IT environments to lower total cost of ownership. Users can access and configure Metered Rack PDUs through secure Web, SNMP, or Telnet Interfaces.



Part Number / Description	Receptacles Type / QTY		Breaker Amperage / QTY	Power Cord Type / Length	Monitoring (local & remote)	Dimensions H x W x D ("")
PDU-AP8866 3 Phase Amps: 60A Output Volts: 208V kW: 17.2 Input Volts: 208V 3PH			60 Amp / 6 3-pole hydraulic-magnetic		<ul style="list-style-type: none"> Alarm Thresholds Local Current Monitoring Display Load indicator LED Remote Management Capabilities via Web, SNMP, and Telnet 	0U 72.00" Vertical 72.00 x 2.20 x 2.00
			On-Off Switch			
			No			Toolless Mounting Yes

Two toolless mounting pegs included. | Detailed monitoring specs available.



Part Number / Description	Receptacles Type / QTY		Breaker Amperage / QTY	Power Cord Type / Length	Monitoring (local & remote)	Dimensions H x W x D ("")
PDU-AP8867 3 Phase Amps: 60A Output Volts: 208V kW: 17.2 Input Volts: 208V 3PH			60 Amp / 6 3-pole hydraulic-magnetic		<ul style="list-style-type: none"> Alarm Thresholds Local Current Monitoring Display Load indicator LED Remote Management Capabilities via Web, SNMP, and Telnet 	0U 72.00" Vertical 72.00 x 2.20 x 2.00
			On-Off Switch			
			No			Toolless Mounting Yes

Two toolless mounting pegs included. | Detailed monitoring specs available.

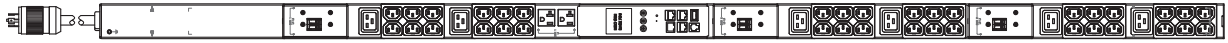


Part Number / Description	Receptacles Type / QTY		Breaker Amperage / QTY	Power Cord Type / Length	Monitoring (local & remote)	Dimensions H x W x D ("")
PDU-AP8868 3 Phase Amps: 35A Output Volts: 208V kW: 10.0 Input Volts: 208V 3PH			35 Amp / 3 3-pole hydraulic-magnetic		<ul style="list-style-type: none"> Alarm Thresholds Local Current Monitoring Display Load indicator LED Remote Management Capabilities via Web, SNMP, and Telnet 	0U 72.00" Vertical 72.00 x 2.20 x 2.00
			On-Off Switch			
			No			Toolless Mounting Yes

Two toolless mounting pegs included. | Detailed monitoring specs available.

ZERO U VERTICAL - METERED RACK POWER DISTRIBUTION UNITS (CONTINUED)

Metered Rack Power Distribution Units (PDUs) provide active metering to enable energy optimization and circuit protection. User-defined alarm thresholds mitigate risk with real-time local and remote alerts to warn of potential circuit overloads. Metered Rack PDUs provide power utilization data to allow Data Center Managers to make informed decisions on load balancing and right sizing IT environments to lower total cost of ownership. Users can access and configure Metered Rack PDUs through secure Web, SNMP, or Telnet Interfaces.



Part Number / Description	Receptacles Type / QTY			Breaker Amperage / QTY	Power Cord Type / Length	Monitoring (local & remote)	Dimensions H x W x D ("")
PDU-AP8865 3 Phase Amps: 30A Output Volts: 120V, 208V kW: 8.6 Input Volts: 208V 3PH				30 Amp / 2 3-pole hydraulic-magnetic		<ul style="list-style-type: none"> Alarm Thresholds Local Current Monitoring Display Load indicator LED Remote Management Capabilities via Web, SNMP, and Telnet 	0U 72.00" Vertical 72.00 x 2.20 x 1.80
				On-Off Switch			Toolless Mounting
				No			Yes

Two toolless mounting pegs included. | Detailed monitoring specs available.



Part Number / Description	Receptacles Type / QTY		Breaker Amperage / QTY	Power Cord Type / Length	Monitoring (local & remote)	Dimensions H x W x D ("")
PDU-AP8841 1 Phase Amps: 30A Output Volts: 200/208V kW: 8.9 Input Volts: 200V, 208V			30 Amp / 2 2-pole hydraulic-magnetic		<ul style="list-style-type: none"> Alarm Thresholds Local Current Monitoring Display Load indicator LED Remote Management Capabilities via Web, SNMP, and Telnet 	0U 70.50" Vertical 70.50 x 2.20 x 1.70
			On-Off Switch			Toolless Mounting
			No			Yes

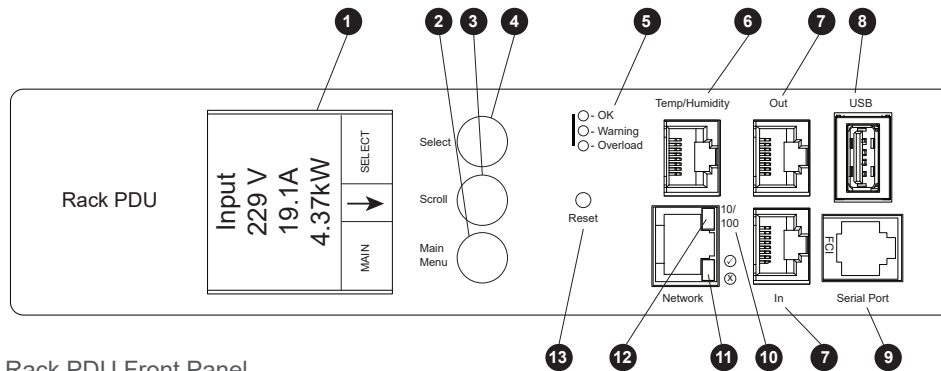
Two toolless mounting pegs included. | Detailed monitoring specs available.



Part Number / Description	Receptacles Type / QTY	Breaker Amperage / QTY	Power Cord Type / Length	Monitoring (local & remote)	Dimensions H x W x D ("")
PDU-AP8831 1 Phase Amps: 15A Output Volts: 100-120V kW: 1.4 Input Volts: 100V, 120V		15 Amp / 1 1-pole hydraulic-magnetic		<ul style="list-style-type: none"> Alarm Thresholds Local Current Monitoring Display Load indicator LED Remote Management Capabilities via Web, SNMP, and Telnet 	0U 35.50" Vertical 35.50 x 2.16 x 1.72
		On-Off Switch			Toolless Mounting
		No			Yes

Two toolless mounting pegs included. | Detailed monitoring specs available.

ZERO U VERTICAL - RACK POWER DISTRIBUTION UNIT METER DETAILS



Rack PDU Front Panel

Item	Function
(1) Display	Shows information about the Rack PDU. In normal operation, input voltage, current, and power refreshes every five seconds.
(2) Main Menu button	Press to view the Rack PDU electrical input.
(3) Scroll button	Press once to display the menu. Press additional times to highlight the desired menu option.
(4) Select button	With a menu option highlighted, press the Select button to display Rack PDU information.
(5) OK, Warning, Overload LED	Indicates the status of the Rack PDU load. See "Load indicator LED" Table.
(6) Temp/Humidity port	Port for connecting a Temperature Sensor or a Temperature/Humidity Sensor.
(7) In and Out ports	For use with the Network Port Sharing feature.
(8) USB port	(For use with a flash drive for firmware upgrades - 5V @ 100ma.)
(9) RJ-12 Serial Port	Port for connecting the Rack PDU to a terminal emulator program for local access to the command line interface.
(10) 10/100 Base-T Connector	Connects the Rack PDU to the network.
(11) Network status LED	See "Network Status" LED Table.
(12) 10/100 LED	See "10/100 LED" Table.
(13) Reset button	Resets the Rack PDU without affecting the outlet status.

Network Status LED

Condition	Description
Off	Shows information about the Rack PDU. In normal operation, input voltage, current, and power refreshes every five seconds.
Solid Green	Press to view the Rack PDU electrical input.
Solid Orange	Press once to display the menu. Press additional times to highlight the desired menu option.
Flashing Green	With a menu option highlighted, press the Select button to display Rack PDU information.
Flashing Orange	Indicates the status of the Rack PDU load. See "Load indicator LED" Table.
Alternately Flashing Green and Orange	If the LED is flashing slowly, the Rack PDU is making DHCP requests*. If the LED is flashing rapidly, the Rack PDU is starting up.

* If you do not use a BOOTP or DHCP server, "Establish Network Settings" to configure the TCP/IP settings of the Rack PDU.

10/100 LED

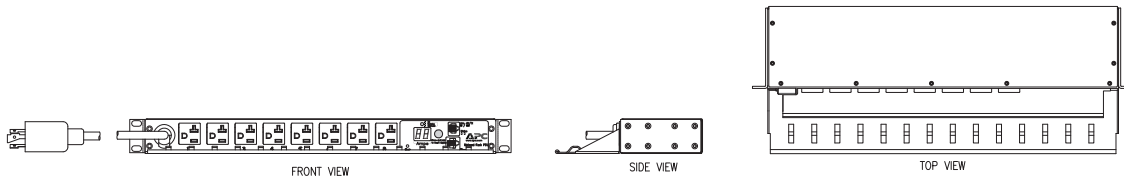
Condition	Description
Off One or more of the following situations exists:	<ul style="list-style-type: none"> The Rack PDU is not receiving input power. The cable that connects the Rack PDU to the network is disconnected or defective The device that connects the Rack PDU to the network is turned off. The Rack PDU itself is not operating properly. It may need to be repaired or replaced. Contact Customer Support.
Solid Green	The Rack PDU is connected to a network operating at 10 Megabits per second (Mbps).
Solid Orange	The Rack PDU is connected to a network operating at 100 Mbps.
Flashing Green	The Rack PDU is receiving or transmitting data packets at 10 Mbps.
Flashing Orange	The Rack PDU is receiving or transmitting data packets at 100 Mbps.

Load Indicator LED

Condition	Description
Solid Green	OK. No load alarms (warning or critical) are present.
Solid Yellow	Warning. At least one load warning alarm is present, but no critical alarms are present.
Flashing Red	Overload. At least one load critical alarm is present.

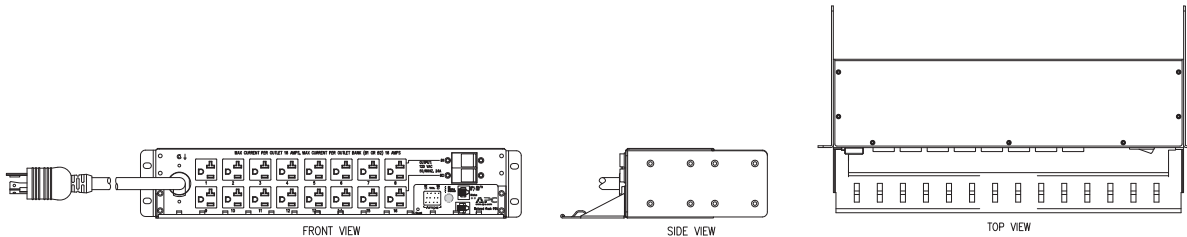
1U & 2U HORIZONTAL - METERED RACK POWER DISTRIBUTION UNITS

Metered rack Power Distribution Units (PDUs) provide real-time remote monitoring of connected loads. User-defined alarms warn of potential circuit overloads before critical IT failures occur.



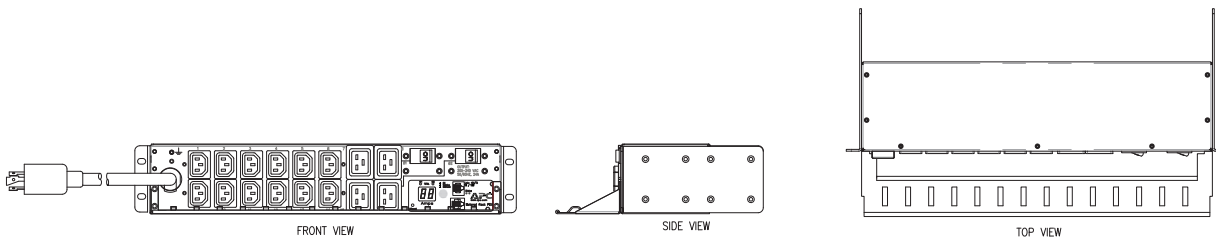
Part Number / Description	Receptacles Type / QTY	Breaker Amperage / QTY	Power Cord Type / Length	Monitoring (local & remote)	Dimensions H x W x D (")
PDU-AP7801B 1 Phase Amps: 20A Output Volts: 120V kW: 1.9 Input Volts: 100V, 120V	NEMA 5-20R / 8 	20 Amp / 1 1-pole hydraulic-magnetic	L5-20P Twist Lock 12' Cord 	<ul style="list-style-type: none"> Alarm Thresholds Local Current Monitoring Display Load indicator LED Remote Management Capabilities via Web, SNMP, and Telnet 	1U Horizontal 1.74 x 17.47 x 4.03
		On-Off Switch			Tooless Mounting
		No			No

Includes: Cord Retention Bracket. | Detailed monitoring specs available.



Part Number / Description	Receptacles Type / QTY	Breaker Amperage / QTY	Power Cord Type / Length	Monitoring (local & remote)	Dimensions H x W x D (")
PDU-AP7802B 1 Phase Amps: 30A Output Volts: 120V kW: 1.9 Input Volts: 100V, 120V	NEMA 5-20R / 16 	30 Amp / 1 1-pole hydraulic-magnetic	L5-30P Twist Lock 12' Cord 	<ul style="list-style-type: none"> Alarm Thresholds Local Current Monitoring Display Load indicator LED Remote Management Capabilities via Web, SNMP, and Telnet 	2U Horizontal 3.48 x 17.47 x 4.41
		On-Off Switch			Tooless Mounting
		No			No

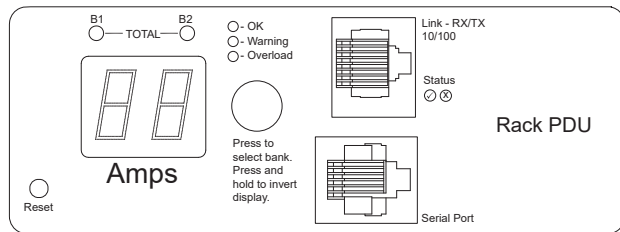
Includes: Cord Retention Bracket. | Detailed monitoring specs available.



Part Number / Description	Receptacles Type / QTY	Breaker Amperage / QTY	Power Cord Type / Length	Monitoring (local & remote)	Dimensions H x W x D (")
PDU-AP7811B 1 Phase Amps: 30A Output Volts: 208V kW: 4.9 Input Volts: 200V, 208V, 230V	IEC 320 C13 / 12 	30 Amp / 1 2-pole hydraulic-magnetic	L6-30P Twist Lock 12' Cord 	<ul style="list-style-type: none"> Alarm Thresholds Local Current Monitoring Display Load indicator LED Remote Management Capabilities via Web, SNMP, and Telnet 	2U Horizontal 3.48 x 17.47 x 4.41
		On-Off Switch			Tooless Mounting
		No			No

Includes: Cord Retention Bracket. | Detailed monitoring specs available.

1U & 2U HORIZONTAL - RACK POWER DISTRIBUTION UNIT METER DETAILS



Rack PDU Front Panel

Item	Function
(1) Display	Shows information about the Rack PDU. In normal operation, input voltage, current, and power refreshes every five seconds.
(2) Main Menu button	Press to view the Rack PDU electrical input.
(3) Scroll button	Press once to display the menu. Press additional times to highlight the desired menu option.
(4) Select button	With a menu option highlighted, press the Select button to display Rack PDU information.
(5) OK, Warning, Overload LED	Indicates the status of the Rack PDU load. See "Load indicator LED" Table.
(6) Temp/Humidity port	Port for connecting a Temperature Sensor or a Temperature/Humidity Sensor.
(7) In and Out ports	For use with the Network Port Sharing feature.
(8) USB port	(For use with a flash drive for firmware upgrades - 5V @ 100ma.)
(9) RJ-12 Serial Port	Port for connecting the Rack PDU to a terminal emulator program for local access to the command line interface.
(10) 10/100 Base-T Connector	Connects the Rack PDU to the network.
(11) Network status LED	See "Network Status" LED Table.
(12) 10/100 LED	See "10/100 LED" Table.
(13) Reset button	Resets the Rack PDU without affecting the outlet status.

Network Status LED

Condition	Description
Off	Shows information about the Rack PDU. In normal operation, input voltage, current, and power refreshes every five seconds.
Solid Green	Press to view the Rack PDU electrical input.
Solid Orange	Press once to display the menu. Press additional times to highlight the desired menu option.
Flashing Green	With a menu option highlighted, press the Select button to display Rack PDU information.
Flashing Orange	Indicates the status of the Rack PDU load. See "Load indicator LED" Table.
Alternately Flashing Green and Orange	If the LED is flashing slowly, the Rack PDU is making DHCP requests*. If the LED is flashing rapidly, the Rack PDU is starting up.

* If you do not use a BOOTP or DHCP server, "Establish Network Settings" to configure the TCP/IP settings of the Rack PDU.

10/100 LED

Condition	Description
Off One or more of the following situations exists:	<ul style="list-style-type: none"> The Rack PDU is not receiving input power. The cable that connects the Rack PDU to the network is disconnected or defective The device that connects the Rack PDU to the network is turned off. The Rack PDU itself is not operating properly. It may need to be repaired or replaced. Contact Customer Support.
Solid Green	The Rack PDU is connected to a network operating at 10 Megabits per second (Mbps).
Solid Orange	The Rack PDU is connected to a network operating at 100 Mbps.
Flashing Green	The Rack PDU is receiving or transmitting data packets at 10 Mbps.
Flashing Orange	The Rack PDU is receiving or transmitting data packets at 100 Mbps.

Load Indicator LED

Condition	Description
Solid Green	OK. No load alarms (warning or critical) are present.
Solid Yellow	Warning. At least one load warning alarm is present, but no critical alarms are present.
Flashing Red	Overload. At least one load critical alarm is present.