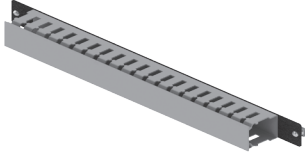


Cable Management Accessories

Cable Ties and Velcro + Vertical, Horizontal and Overhead Organizers.

Cable Organizer with Finger Duct

Available in 1U and 2U heights.
Includes hinged cover panel.
Available in 19" and 24" EIA mounting widths.
Includes mounting hardware.



Part Number		Part Number	
1U	CMH-1U-19-FD1	2U	CMH-2U-19-FD1
1U	CMH-1U-24-FD1	2U	CMH-2U-24-FD1

Cable Organizer with 5 D Rings

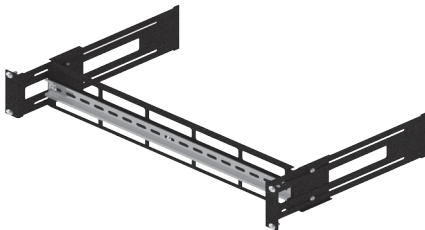
Includes mounting hardware.



Part Number	
1U	CMP-1U-19

DIN Rail

Rail is 35mm DIN type 3.
8.5" of front-to-rear adjustment.
Available in 19" and 24" EIA mounting widths.
Includes mounting hardware.



Part Number	
2U	CMH-2U-19-DIN
2U	CMH-2U-24-DIN



DIN Rail Detail

Lacing Bar

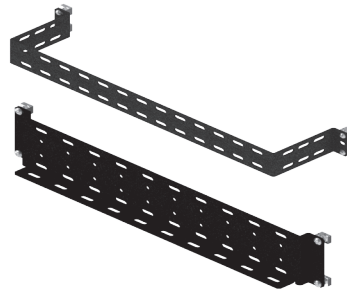
Great for supporting cables as they exit the back of equipment preventing stress to expensive ports.
Includes mounting hardware.



Part Number	
1U	CMH-1U-19-LB1

Lacing Panels

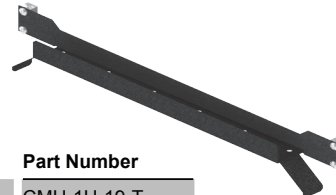
Ideal for cable runs horizontally.
Accepts accessory style(s): A or C
Includes mounting hardware.



Part Number	
1U	CMH-1U-19-LP1
2U	CMH-2U-19-LP2

Cable Trough

Available in 19" and 24" EIA mounting widths.
Accepts accessory style(s): A
Includes mounting hardware.



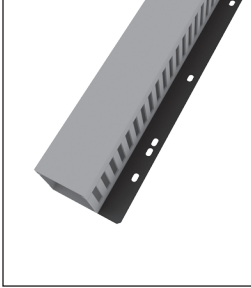
Part Number	
1U	CMH-1U-19-T
1U	CMH-1U-24-T

We see enclosures differently™



Cable Management Accessories

Cable Ties and Velcro + Vertical, Horizontal and Overhead Organizers.

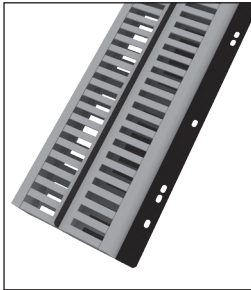


Vertical Cable Organizer with Finger Duct

Finger duct size: 2.25 x 2.25
Smooth edges protect wires/cables from abrasion.
V shaped slot lead in speeds installation.
UL 94V-0 flammability rating.
Includes snap-on cover and mounting hardware.

Part Number

30U	CMV-52-FD1
35U	CMV-61-FD1
36U	CMV-63-FD1
40U	CMV-70-FD1
42U	CMV-73-FD1
45U	CMV-78-FD1

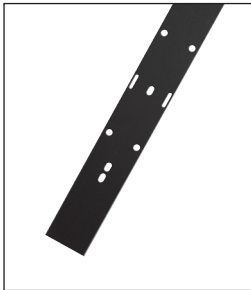


Vertical Cable Organizer with Dual Finger Duct

Finger duct size: 2.25 x 2.25
Smooth edges protect wires/cables from abrasion.
V shaped slot lead in speeds installation.
UL 94V-0 flammability rating.
Includes snap-on covers and mounting hardware.

Part Number

30U	CMV-52-FD2
35U	CMV-61-FD2
36U	CMV-63-FD2
40U	CMV-70-FD2
42U	CMV-73-FD2
45U	CMV-78-FD2

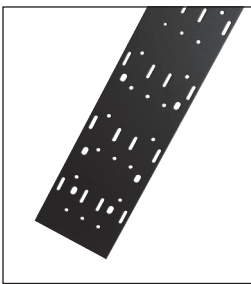


2" Wide Vertical Lacing Panel

Material: Steel
Accepts accessory style(s): A and C
Slots allow Velcro or other cable straps to neatly organize cable bundles.
Includes mounting hardware.

Part Number

30U	CMV-52-LP1
35U	CMV-61-LP1
36U	CMV-63-LP1
40U	CMV-70-LP1
42U	CMV-73-LP1
45U	CMV-78-LP1



3.5" Wide Vertical Lacing Panel

Material: Aluminum
Accepts accessory style(s): B and C
Slots allow Velcro or other cable straps to neatly organize cable bundles.
Includes mounting hardware.

Part Number

6U	WMP-10
9U	WMP-15
10U	WMP-17
12U	WMP-21
14U	WMP-24
15U	WMP-26
16U	WMP-28
18U	WMP-31
20U	WMP-35
22U	WMP-38

Part Number

23U	WMP-40
24U	WMP-42
25U	WMP-43
26U	WMP-45
28U	WMP-49
30U	WMP-52
35U	WMP-61
36U	WMP-63
40U	WMP-70
45U	WMP-78

We see enclosures differently™

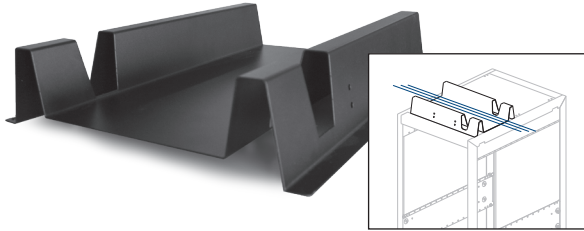


Cable Management Accessories

Cable Ties and Velcro + Vertical, Horizontal and Overhead Organizers.

Overhead Cable Tray

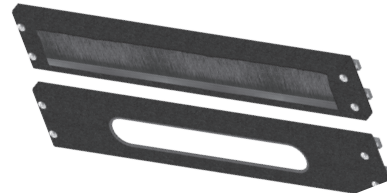
Allows cables to run left to right on top of a cabinet.
Available for 19" or 24" EIA width cabinets.
Accepts accessory style(s): A
Use in conjunction with the appropriate filler panel to cover entire top opening.



	Part Number	Part Number
Zero U	CMO-1419-LR	CMO-1424-LR

Cable Pass Throughs

Choose from plain grommet or brushed grommet.
Available in 19" and 24" EIA mounting widths.



Brushed Grommet Part Numbers		
2U	XPN-0319-BGP	XPN-0324-BGP

Plain Grommet Part Numbers		
2U	XPN-0319-CAP	XPN-0324-CAP

Velcro, Cable Ties and Other Accessories

The items listed below can be used with the Vertical, Horizontal and Overhead products. Match the accessory style with the product.

Style A: Snaps into .250 diameter hole.

Part Number CMA-001-A QTY: 100		Part Number CMA-002-A QTY: 25		Part Number CMA-003-A QTY: 100		Part Number CMA-004-A QTY: 100	
Part Number CMA-005-A QTY: 25		Part Number CMA-007-A QTY: 25		Part Number CMA-008-A QTY: 100			

Style B: Screws in with self tapping screws.

Part Number DCR-2375 QTY: 1		Part Number DWC-0225 QTY: 1		Part Number DFD-22 QTY: 1		Part Number DVS-11 QTY: 10	
---	--	---	--	---	--	--	--

Style C: Universal.

Part Number CMA-001-C QTY: 20		Part Number GMT-0012 Grommet sold by the foot.	
---	--	--	--

We see enclosures differently™

