



Emcor Enclosures  
2900 37th St. NW, Bldg 003  
Rochester, MN 55901

[www.emcorenclosures.com](http://www.emcorenclosures.com)  
+1 507-287-3535

# CompuDesk® Gen2

## Modern Electronic Workstation

The flagship workstation, redesigned with updated features and configurations that enhance durability, modularity, and modifiability.



# Modern Electronic Workstation



The CompuDesk® Gen2 is a redesign that enhances the most practical and valuable features from its predecessor and delivers increased functionality through thoughtful development. The Gen2 features a few material upgrades, including a new desktop surface that includes a PVC band which lines the edge of the workspace surface and is color coordinated with the customer's laminate color, improving durability and aesthetics.

Emcor's CompuDesk® Gen2 includes improvements to both the electronic (rack-mounting) and utility (drawer) pedestals. The new utility pedestals have added handles and locks for storage access and security. Electronic pedestals are available with new cable management solutions that can augment the integrated cable routing throughout the desk's tubed architecture. Design improvements in the channels underneath provide more thorough access to cables and accessories for more streamlined workflow capabilities.

## Dimensions

30.5 ±0.25 (H)  
60" or 72" (W)  
33" (D)

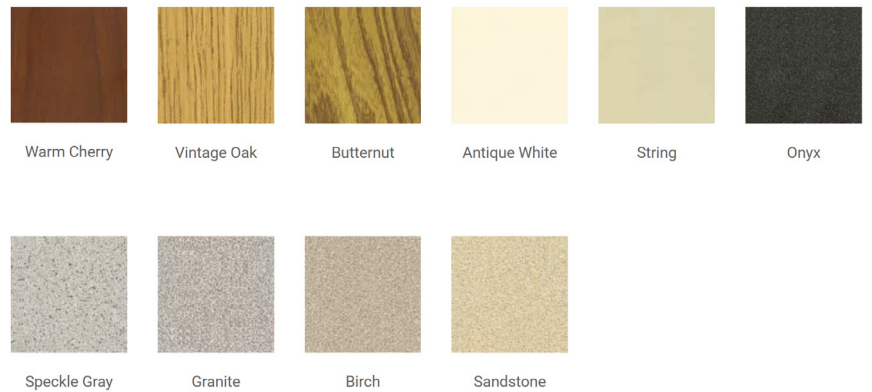
## Features

Thru-Hole mounting rails – Adjustable front to rear  
10-32 tapped mounting rails optional  
Compatible with ESQ® Series accessories  
Durable desktop with matching PVC edge  
Integrated channels for cable routing  
Utility drawer locking handles  
30.75" electronic rack depth  
24.5" (14U) Vertical Rack Space  
1" desktop thickness

## Paint Finishes



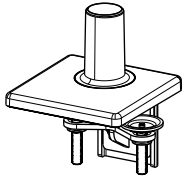
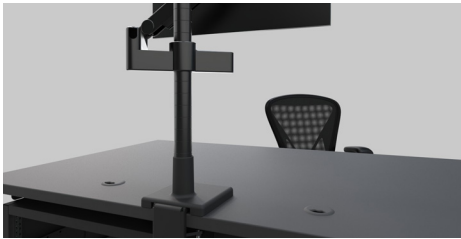
## Laminate Finishes



# Monitor Mounts



The Compudesk® Gen2 accommodates monitor mounts that support multiple monitor configurations, giving you the ability to mount 1 to 4 monitors. For more information, visit the [ESQ® Series product page](#) on the Emscor website to view compatible rack-mount accessories.

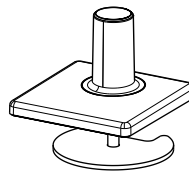


**Part Number**

HS-B-C

Clamp Style Mount

**NOTE:** This mount requires a square edge to clamp to.



**Part Number**

HS-B-G

Grommet Style Mount

**NOTE:** This mount requires a grommet hole to be drilled in the work surface.

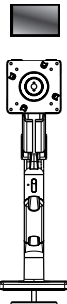
## Mounting Base options for Articulating Arms

The following base options can be used in conjunction with work surface or frame to mount an articulating arm to. These base options accept monitor arm configuration that come with a pole. All mounting hardware is included.

## Heavy Duty Mount - All In One

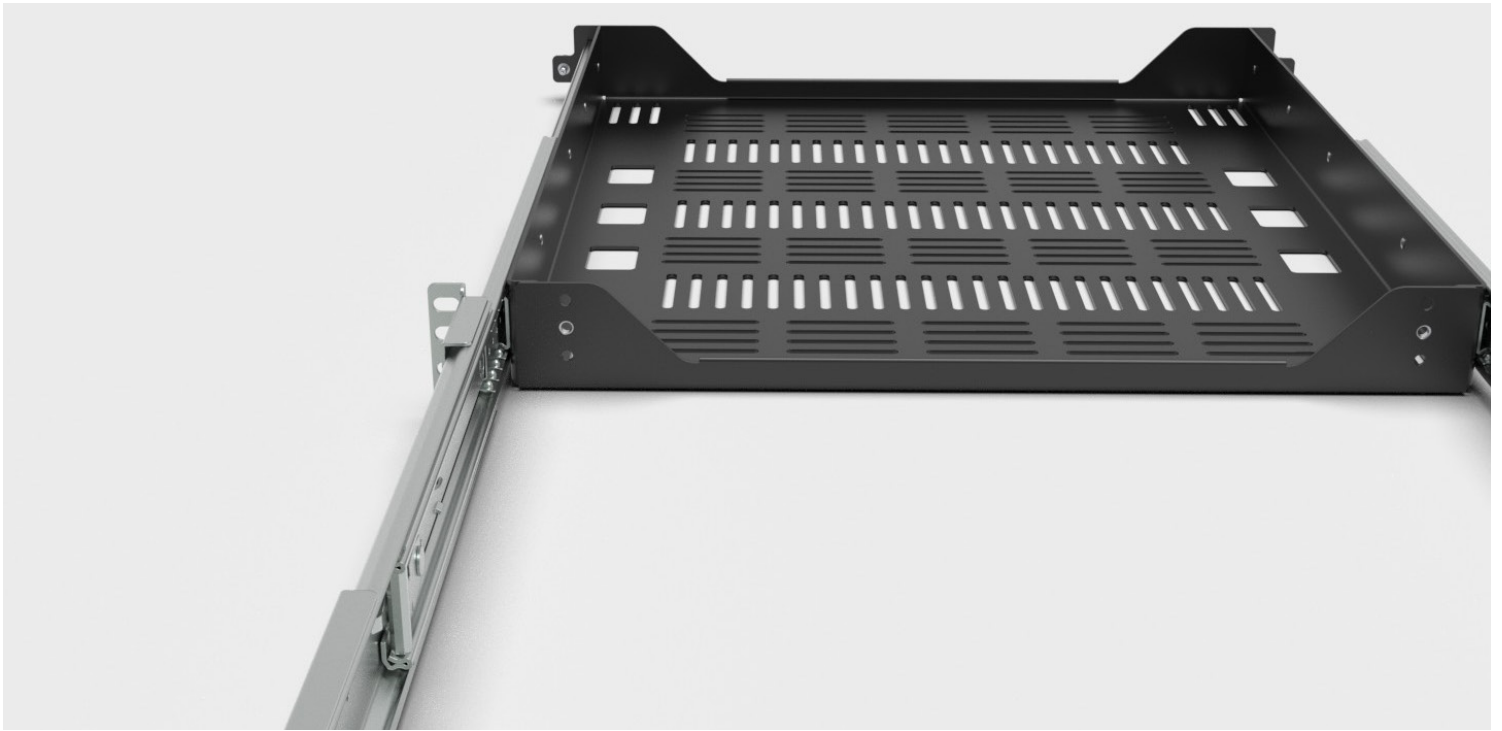
The following option can be used to support monitors weighing up to 20 lbs. This set-up includes the grommet-style mount and does not require a mount to be ordered separately.

1 Monitor Set-Up



**Part Number**

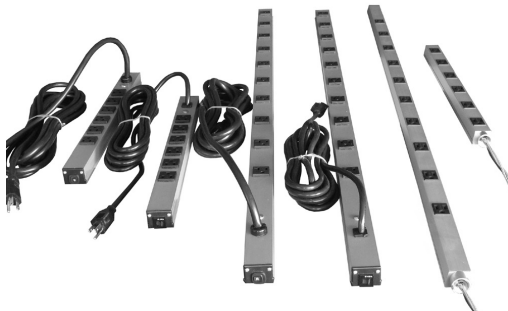
HS-G1-AD-M8



# Accessories

CompuDesk® Gen2 is built on the original Series III architecture, extending the pedestals down to the ground for increased stability, storage, and rack-mounting space.

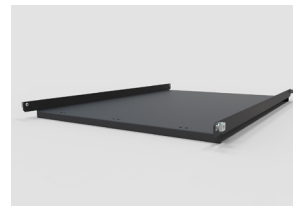
The workstation's redesign encourages modular monitor installation with both clamp-on and grommet-mounting capabilities. Plug-in strips and grounding bus bars can be easily added on with embedded accommodations. The workstation is compatible with all ESQ® accessories and has a 600 lb. topside load rating.



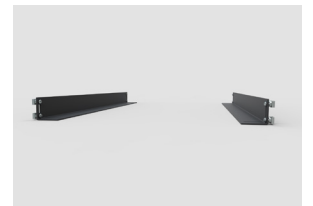
## Compatible with all ESQ® accessories



Sliding Shelves



Fixed Shelves



Chassis Guides

- Air Flow Management
- Bottoms and Bases
- Cable Management
- Casters and Levelers
- Doors
- Filler or Blanking Panels
- Frames
- Laminate
- Lighting

- Monitor Arm Mounts
- Mounting Rails
- Paint
- Power
- Shelves and Drawers
- Side Panels
- Tops
- Other Accessories

# Standard Configurations

The CompuDesk® Gen2 aims to provide the most value in a workstation by giving our customers the ability to tune up the COTS offering with as many features as necessary to satisfy their unique requirements. Convenience, functionality, and survivability were integral to the engineering redesign and we're excited to breathe new life into an old fan favorite.

The CompuDesk® Gen2 can be modified in any dimension or can be manufactured from alternate materials for improved signal control. Should our standard configurations prove insufficient for your application, contact Emcor to inquire about finding the right product to meet your specifications.

Drawing Number	Part Number	Pedestal	Width (inches)
467804	DK-3360-EO	RM Pedestal Left	60
467800	DK-3360-OE	RM Pedestal Right	60
467798	DK-3360-OO	No pedestals	60
467802	DK-3360-OU	Drawer Right	60
467806	DK-3360-UO	Drawer Left	60
467808	DK-3372-EE	RM Both Sides	72
467805	DK-3372-EO	RM Pedestal Left	72
467810	DK-3372-EU	RM Ped Left/Drawer Right	72
467801	DK-3372-OE	RM Ped Right	72
467799	DK-3372-OO	No pedestals	72
467803	DK-3372-OU	Drawer right	72
467811	DK-3372-UE	Drawers left/RM Right	72
467807	DK-3372-UO	Drawers Left	72
467809	DK-3372-UU	Drawers Both Sides	72



Emcor Enclosures  
2900 37th St. NW, Bldg 003  
Rochester, MN 55901

[www.emcorenclosures.com](http://www.emcorenclosures.com)  
+1 507-287-3535

